

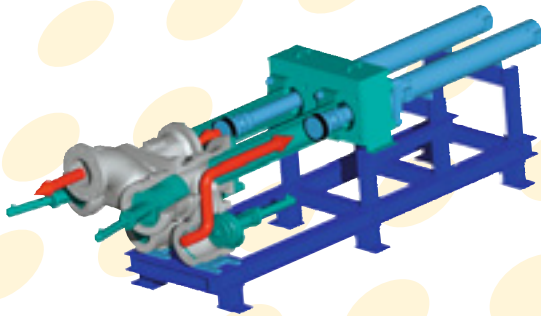








## The Saxlund Duplex-Pump



Quick action couplings on both the suction and pressure sides facilitate a speedy supply to the inlet and outlet sections. The generous dimensions reduce stroke and cycle times. Through this, the operational reliability for long-term, continual use can be guaranteed and is also cost-effective.

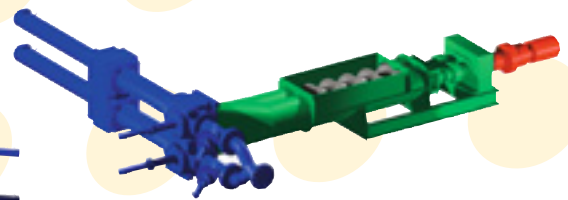
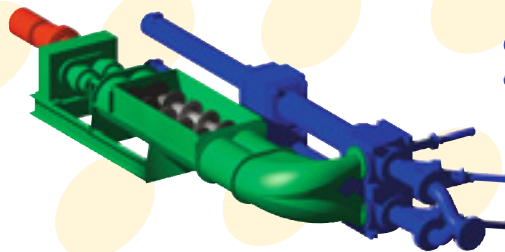
Connection to other feeding equipment is such that the overall height is very low. This in turn means that the silo at the sewage sludge reception station can be designed with a minimum height construction, which can reduce building costs quite considerably.

The Saxlund „Duplex“ Pumps have been developed for the ultimate demands in sewage sludge reception and high conveying capacities. The 250 mm diameter gate valves have been specially designed to facilitate free-flow from the inlet via the conveying cylinder to the outlet. The design achieves a smooth, easy flow of the material as well as prevents foreign matter entering the system.

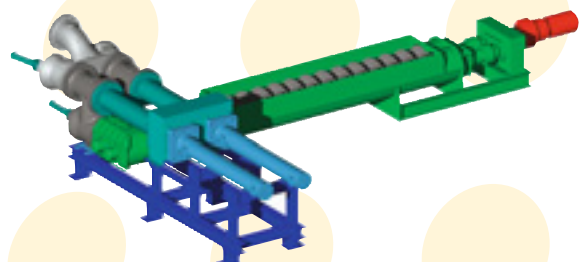
The pump has been specially developed to encompass all the advantages of other pumps on the market.

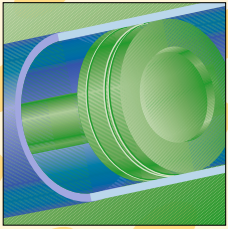


## Different Arrangements of the SAXLUND Solids Pumps



Due to the modular design it is possible to arrange the pumps according to their space requirements and kind of application.



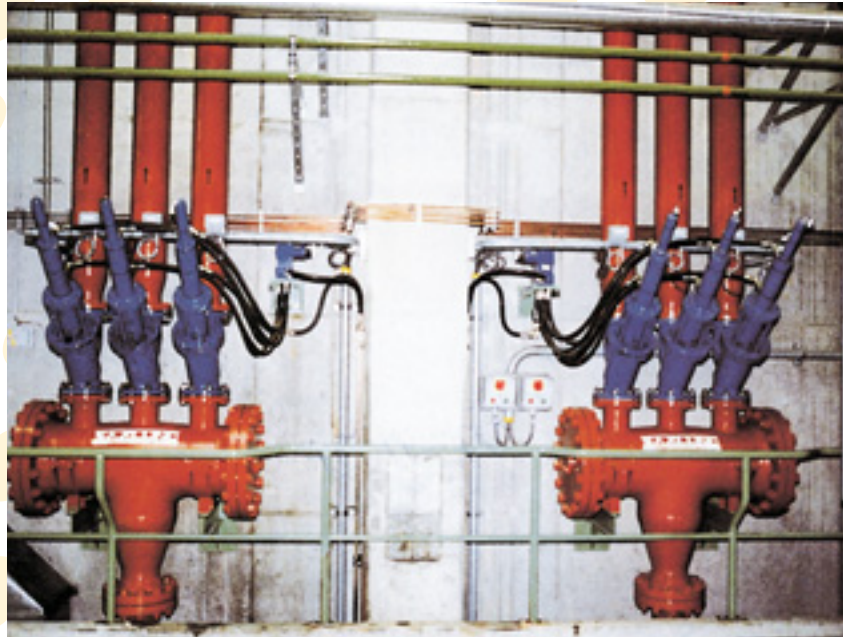


**Distribution-patented:**

Saxlund International can provide a distributor station for directing the cake to where it is required.

The apparatus, fitted with hydraulically actuated valves, enables automatic distribution of the sludge cake mass flow.

More detailed information is available on request.



Distributor Station for splitting-up the conveying flow between three storage containers.

[www.saxlund.de](http://www.saxlund.de)

Germany:

**Saxlund International GmbH**  
Heidelberg 1, 4+5  
D-29614 Soltau-Harber  
Tel.: (+49) 51 91/98 11-0  
Fax: (+49) 51 91/98 11-39  
e-mail: [info@saxlund.de](mailto:info@saxlund.de)

Sweden:

**Saxlund International AB**  
P.O. Box 79  
S-13722 Västerhaninge  
Tel.: (+46) 8 50 41 05 80  
Fax: (+46) 8 50 41 05 99  
e-mail: [info@saxlund.se](mailto:info@saxlund.se)

United Kingdom:

**Saxlund International Ltd.**  
11 Freemantle Business Centre  
Millbrook Road East  
Southampton, SO15 1JR  
Tel.: (+44) 23 80 63 63 30  
Fax: (+44) 23 80 63 63 43  
e-mail: [info@saxlund.co.uk](mailto:info@saxlund.co.uk)

**Products for silo and conveying technology:**

- Saxlund Sliding Frames
- Saxlund Push Floors
- Tubefeeders
- Saxlund Rotors
- Saxlund Solids Pumps
- Troughed Chain Conveyors
- Screw Conveyors
- Elevators
- Rotary Valves
- Combustion Plants
- Control Systems

